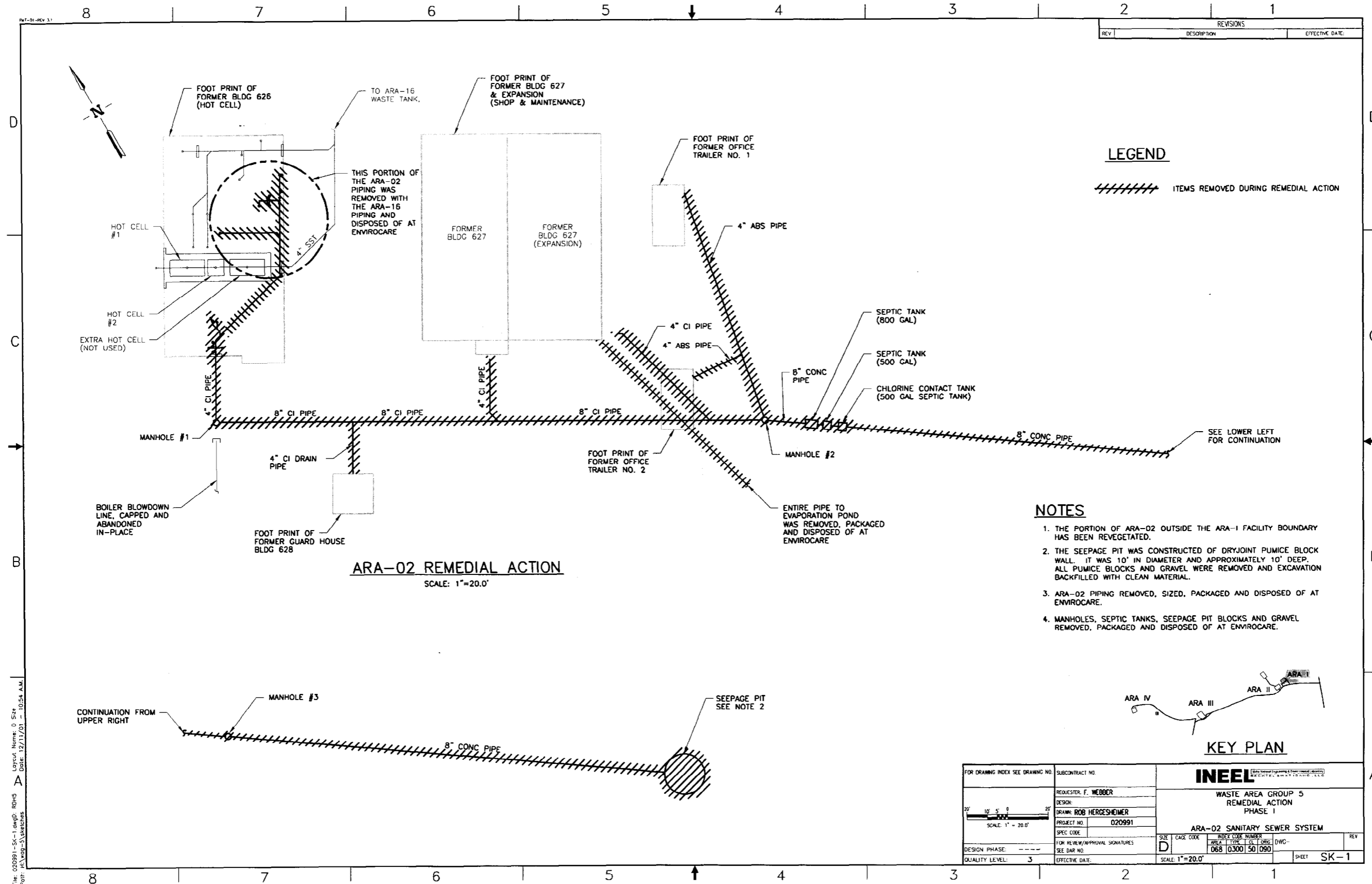


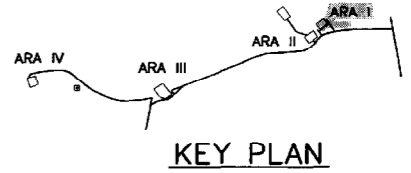
Appendix A
WAG 5 Phase I As-Built Drawings



REVISIONS	
REV	EFFECTIVE DATE

LEGEND
 // // // // // ITEMS REMOVED DURING REMEDIAL ACTION

- NOTES**
1. THE PORTION OF ARA-02 OUTSIDE THE ARA-1 FACILITY BOUNDARY HAS BEEN REVEGETATED.
 2. THE SEEPAGE PIT WAS CONSTRUCTED OF DRYJOINT PUMICE BLOCK WALL. IT WAS 10' IN DIAMETER AND APPROXIMATELY 10' DEEP. ALL PUMICE BLOCKS AND GRAVEL WERE REMOVED AND EXCAVATION BACKFILLED WITH CLEAN MATERIAL.
 3. ARA-02 PIPING REMOVED, SIZED, PACKAGED AND DISPOSED OF AT ENVIROCORE.
 4. MANHOLES, SEPTIC TANKS, SEEPAGE PIT BLOCKS AND GRAVEL REMOVED, PACKAGED AND DISPOSED OF AT ENVIROCORE.

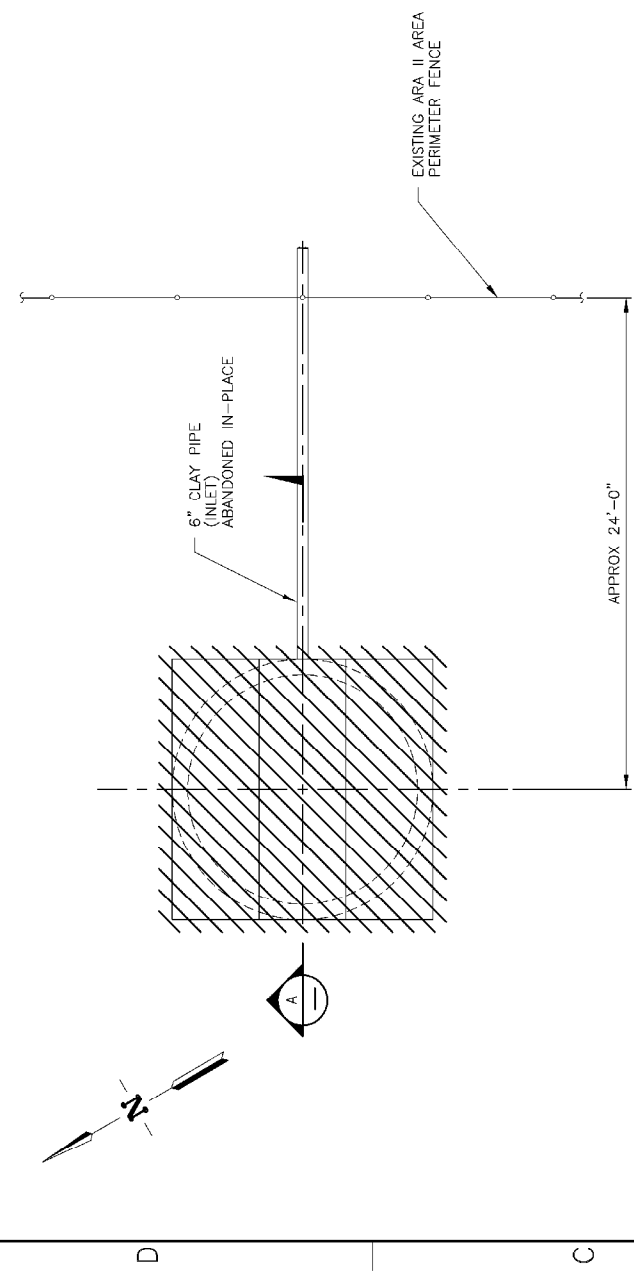


ARA-02 REMEDIAL ACTION
 SCALE: 1"=20.0'

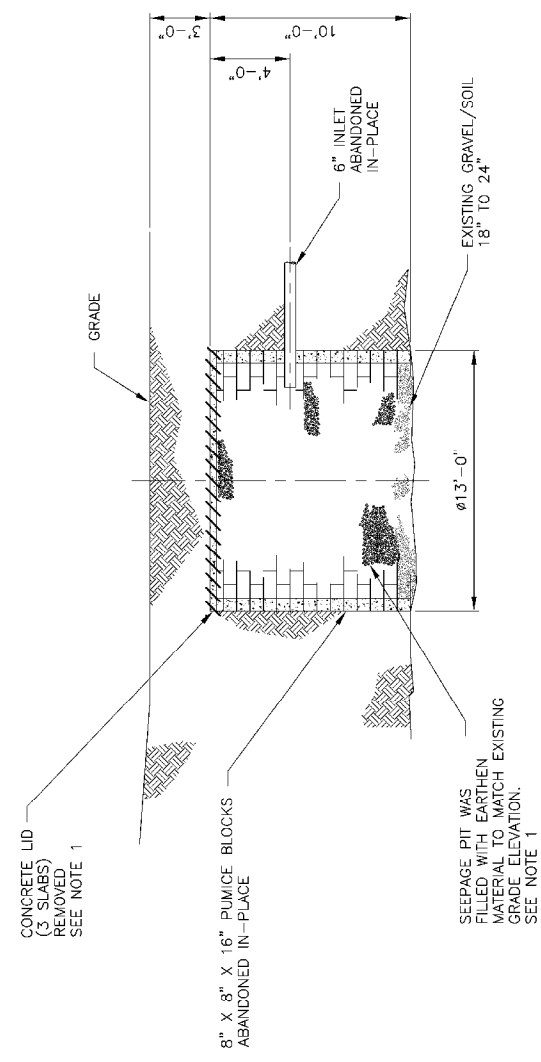
FOR DRAWING INDEX SEE DRAWING NO.	SUBCONTRACT NO.	INEEL	
REQUERSTER: F. WEBBER	DESIGNER: ROB HERGESHEIMER	WASTE AREA GROUP 5 REMEDIAL ACTION PHASE I	
PROJECT NO. 020991	SPEC CODE	ARA-02 SANITARY SEWER SYSTEM	
FOR REVIEW/APPROVAL SIGNATURES	SEE DAR NO.	SCALE: 1"=20.0'	SHEET SK-1

File: 020991-5c-1.dwg, D Size, Layout Name: D Size, Date: 12/11/03, 10:54 A.M.
 Path: \\h:\ep-5\sketches

REV	DESCRIPTION	REVISIONS	EFFECTIVE DATE



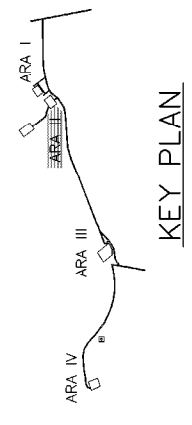
ARA-08 REMEDIAL ACTION
SCALE: 1/4"=1'-0"



SECTION A
SCALE: 1/4"=1'-0"

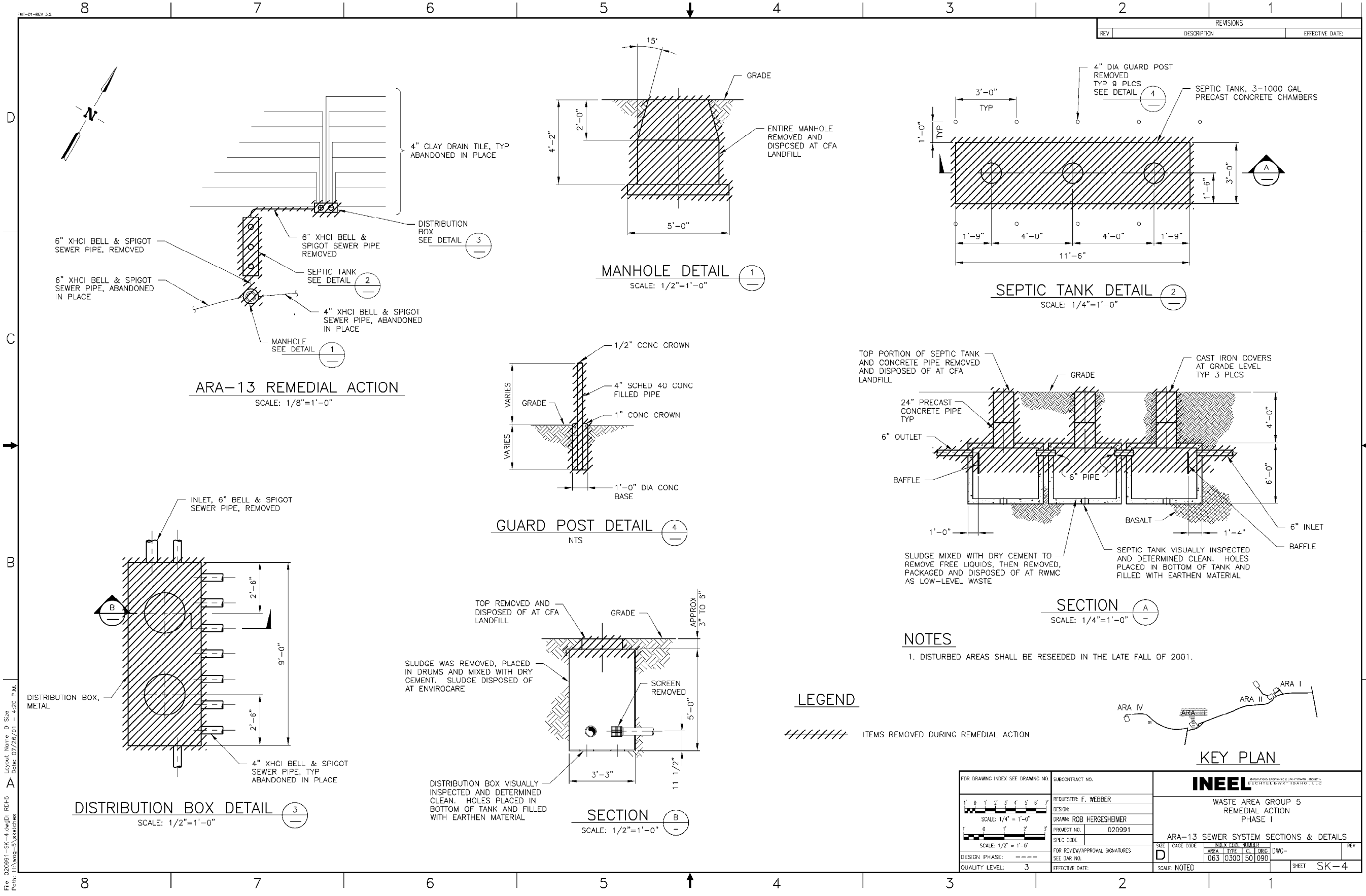
LEGEND
///// - ITEMS REMOVED DURING REMEDIAL ACTION

NOTES
1. CONCRETE LID WAS REMOVED. REMAINING PIT WAS BACK FILLED USING EARTHEN MATERIAL TO MATCH EXISTING GRADE ELEVATION AND THE DISTURBED AREA WAS STABILIZED.



FOR DRAWING INDEX SEE DRAWING NO.		SUBCONTRACT NO.
DESIGNER: REQUESTER: F. WEBBER		
DRAWN: J.A. LAWRENCE		
PROJECT NO.: 020891		
SPEC CODE:		
FOR REVIEW/APPROVAL SIGNATURES:		
SEE DRAWING NO.		
DESIGN PHASE: ---	QUALITY LEVEL: 3	EFFECTIVE DATE:
SCALE: 1/4"=1'-0"		SHEET SK-3

INEEL	
WASTE AREA GROUP 5 REMEDIAL ACTION PHASE 1	
SIZE:	AREA-08 SEEPAGE PIT
AREA:	
DATE: 07/01/03	
DWG:	



ARA-13 REMEDIAL ACTION
SCALE: 1/8"=1'-0"

MANHOLE DETAIL 1
SCALE: 1/2"=1'-0"

SEPTIC TANK DETAIL 2
SCALE: 1/4"=1'-0"

GUARD POST DETAIL 4
NTS

SECTION A
SCALE: 1/4"=1'-0"

DISTRIBUTION BOX DETAIL 3
SCALE: 1/2"=1'-0"

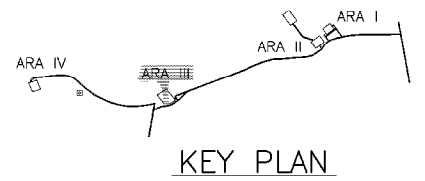
SECTION B
SCALE: 1/2"=1'-0"

NOTES

- 1. DISTURBED AREAS SHALL BE RESEDED IN THE LATE FALL OF 2001.

LEGEND

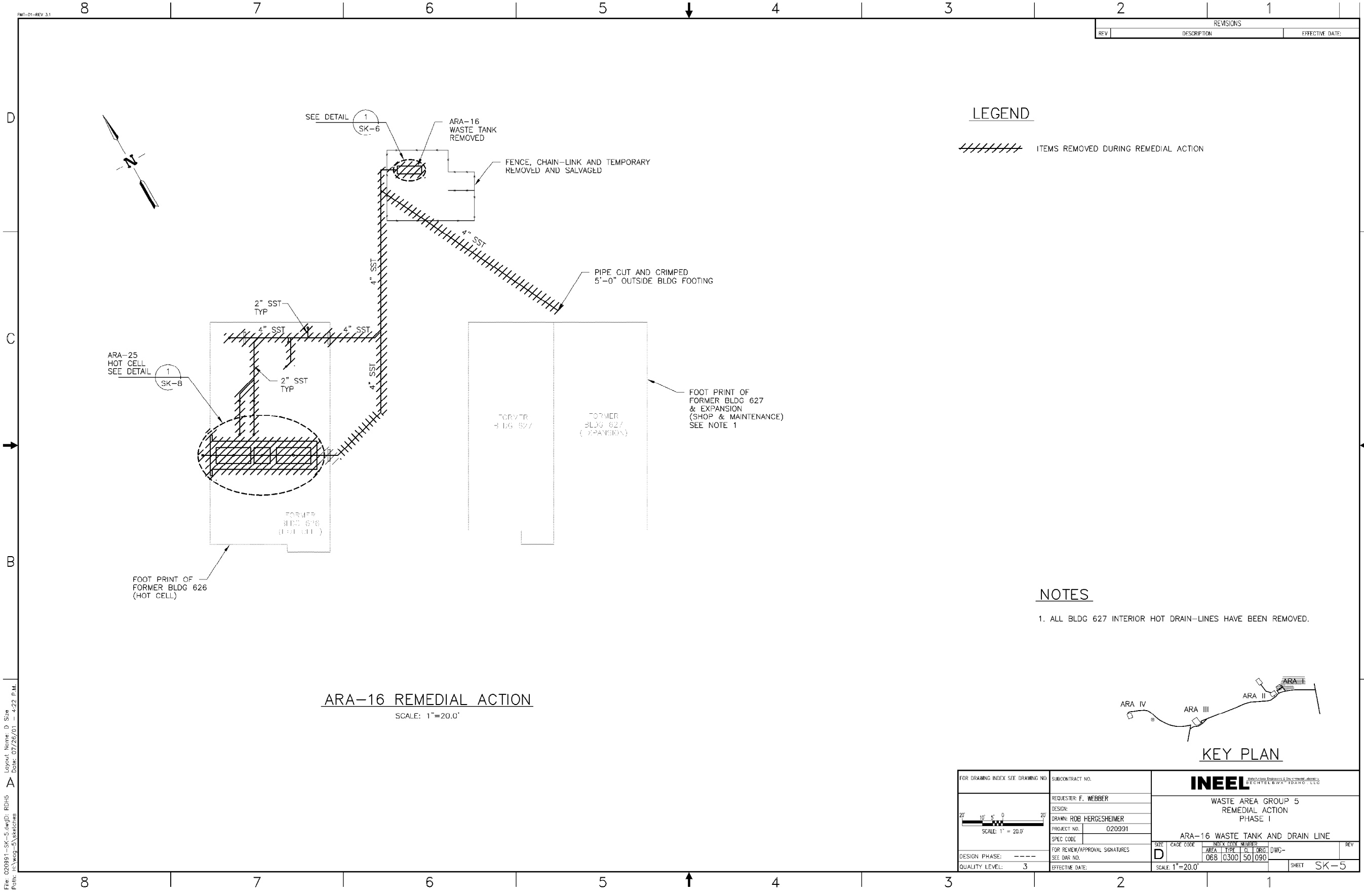
////// ITEMS REMOVED DURING REMEDIAL ACTION



KEY PLAN

FOR DRAWING INDEX SEE DRAWING NO.		SUBCONTRACT NO.		INEEL WASTE AREA GROUP 5 REMEDIAL ACTION PHASE I													
1 2 3 4 5 6 7 SCALE: 1/4" = 1'-0"		REQUESTER: F. WEBBER															
1 2 3 4 5 SCALE: 1/2" = 1'-0"		DESIGN: ROB HERGESHEIMER		<table border="1"> <tr> <td>AREA</td> <td>TYPE</td> <td>CL</td> <td>PREC</td> <td>DWG</td> <td>REV</td> </tr> <tr> <td>063</td> <td>0300</td> <td>50</td> <td>090</td> <td></td> <td></td> </tr> </table>		AREA	TYPE	CL	PREC	DWG	REV	063	0300	50	090		
AREA	TYPE	CL	PREC			DWG	REV										
063	0300	50	090														
DESIGN PHASE: ---		PROJECT NO: 020991		<table border="1"> <tr> <td>SCALE: NOTED</td> <td>SHEET</td> <td>SK-4</td> </tr> </table>		SCALE: NOTED	SHEET	SK-4									
SCALE: NOTED	SHEET	SK-4															
QUALITY LEVEL: 3		SPEC CODE		<table border="1"> <tr> <td>DATE</td> <td>BY</td> </tr> <tr> <td></td> <td></td> </tr> </table>		DATE	BY										
DATE	BY																
EFFECTIVE DATE:		FOR REVIEW/APPROVAL SIGNATURES		<table border="1"> <tr> <td>DATE</td> <td>BY</td> </tr> <tr> <td></td> <td></td> </tr> </table>		DATE	BY										
DATE	BY																
		SEE DAR NO.															

File: 020991-SK-4.dwg: RDHS
 Plot: 02/20/01 4:20 P.M.
 Layout Name: D Size
 Date: 02/20/01 4:20 P.M.



REVISIONS		
REV	DESCRIPTION	EFFECTIVE DATE

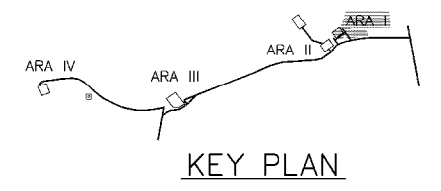
LEGEND

////// ITEMS REMOVED DURING REMEDIAL ACTION

NOTES

- 1. ALL BLDG 627 INTERIOR HOT DRAIN-LINES HAVE BEEN REMOVED.

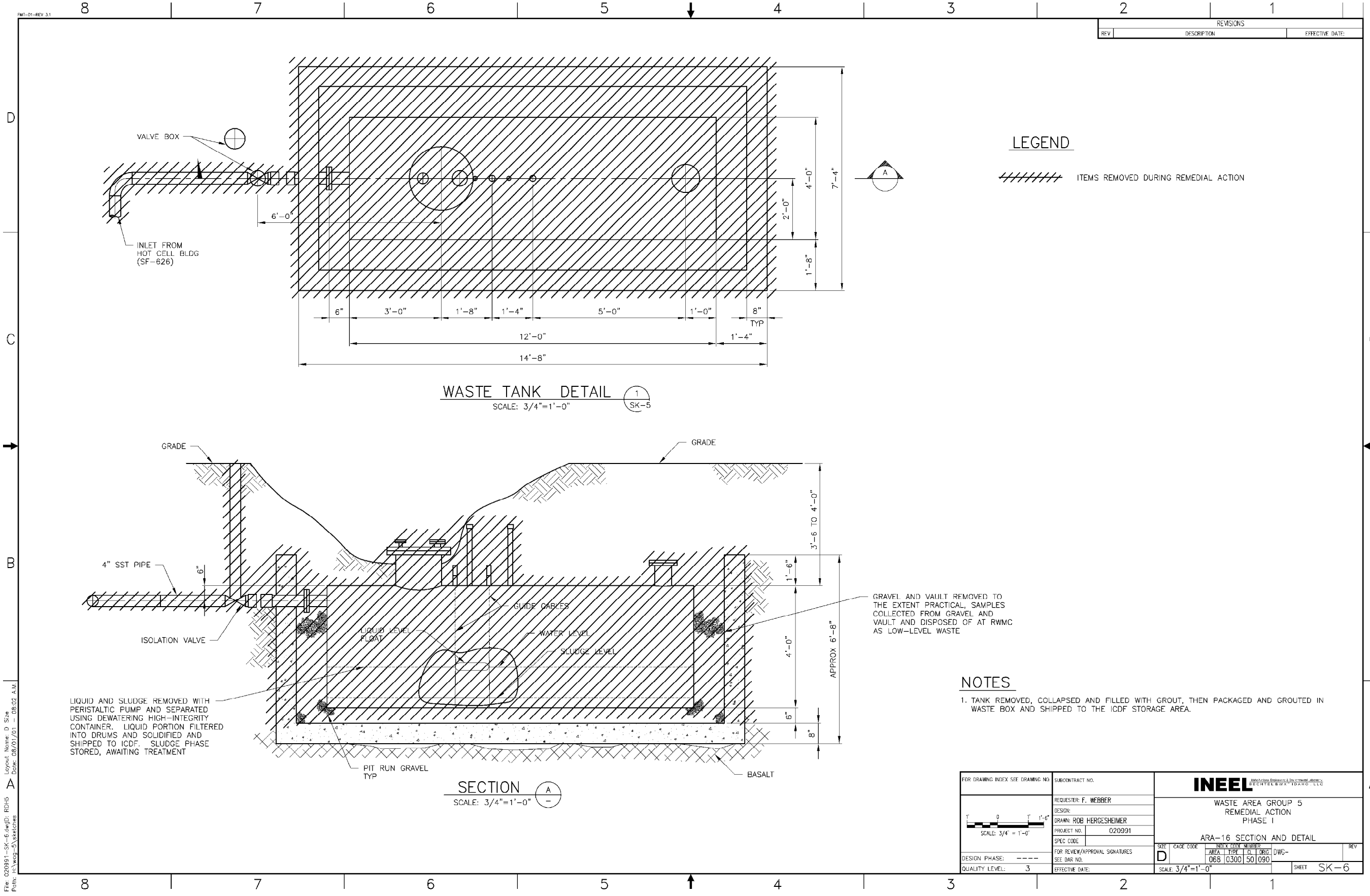
ARA-16 REMEDIAL ACTION
SCALE: 1"=20.0'



KEY PLAN

FOR DRAWING INDEX SEE DRAWING NO.	SUBCONTRACT NO.	INEEL <small>INTEGRATED NEUTRON ENGINEERING & TECHNOLOGY</small>			
DESIGN PHASE: ---	REQUESTER: F. WEBBER	WASTE AREA GROUP 5 REMEDIAL ACTION PHASE I			
QUALITY LEVEL: 3	DESIGN: ROB HERGESHEIMER	ARA-16 WASTE TANK AND DRAIN LINE			
	PROJECT NO. 020991	SIZE	CODE	INDEX	NUMBER
	SPEC CODE	D	068	0300	50 090
	FOR REVIEW/APPROVAL SIGNATURES	SCALE: 1"=20.0'			
	SEE DAR NO.	DWG-			
	EFFECTIVE DATE:	SHEET SK-5			

File: 020991-SK-5.dwg; RDH5
 Plot: 07/28/01 4:22 P.M.
 Layout Name: D Size
 Date: 07/28/01 4:22 P.M.



REVISIONS		
REV	DESCRIPTION	EFFECTIVE DATE

LEGEND

ITEMS REMOVED DURING REMEDIAL ACTION

WASTE TANK DETAIL
SCALE: 3/4"=1'-0"
SK-5

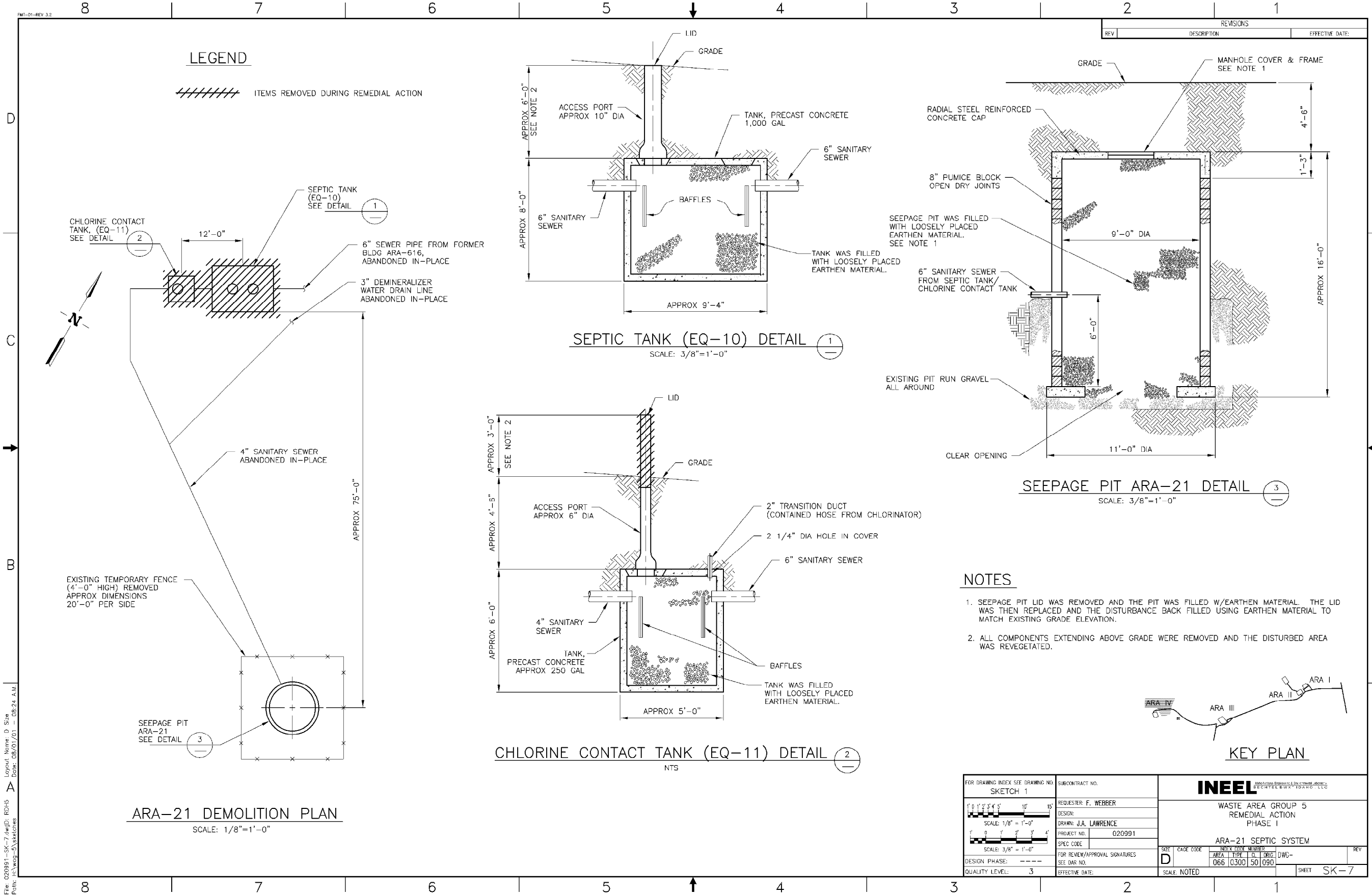
SECTION A-A
SCALE: 3/4"=1'-0"

NOTES

- TANK REMOVED, COLLAPSED AND FILLED WITH GROUT, THEN PACKAGED AND GROUTED IN WASTE BOX AND SHIPPED TO THE ICDP STORAGE AREA.

FOR DRAWING INDEX SEE DRAWING NO.	SUBCONTRACT NO.	INEEL	
DESIGNER: F. WEBBER	DESIGN: ROB HERGESHEIMER	WASTE AREA GROUP 5 REMEDIAL ACTION PHASE I	
PROJECT NO. 020991	SPEC CODE	ARA-16 SECTION AND DETAIL	
FOR REVIEW/APPROVAL SIGNATURES	SCALE 3/4"=1'-0"	SIZE D	REV
SEE BAR NO.	EFFECTIVE DATE	AREA 066	TYP 0300
QUALITY LEVEL: 3		SCALE 3/4"=1'-0"	DRG-090
			SHEET SK-6

File: 020991-SK-6.dwg
 Plot: 03/21/01 10:02 AM
 Layout Name: D Size
 Date: 03/21/01 10:02 AM



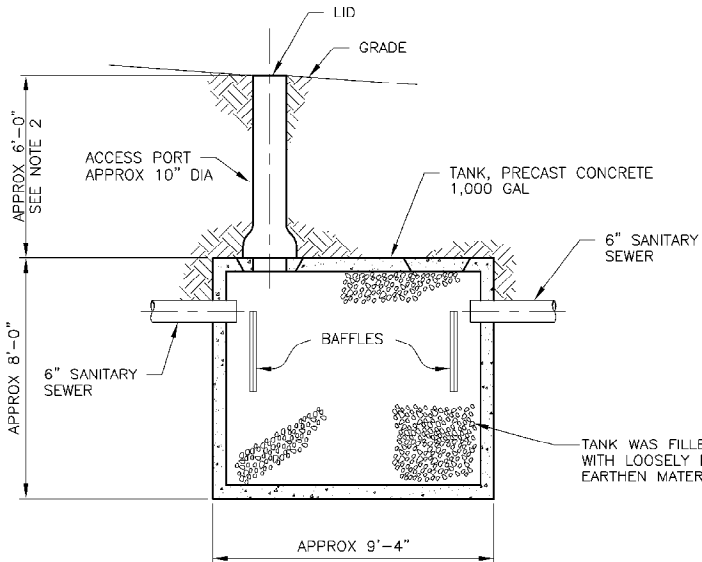
LEGEND
 // // // // ITEMS REMOVED DURING REMEDIAL ACTION

CHLORINE CONTACT TANK, (EQ-11) SEE DETAIL 2
 SEPTIC TANK (EQ-10) SEE DETAIL 1
 6" SEWER PIPE FROM FORMER BLDG ARA-616, ABANDONED IN-PLACE
 3" DEMINERALIZER WATER DRAIN LINE ABANDONED IN-PLACE

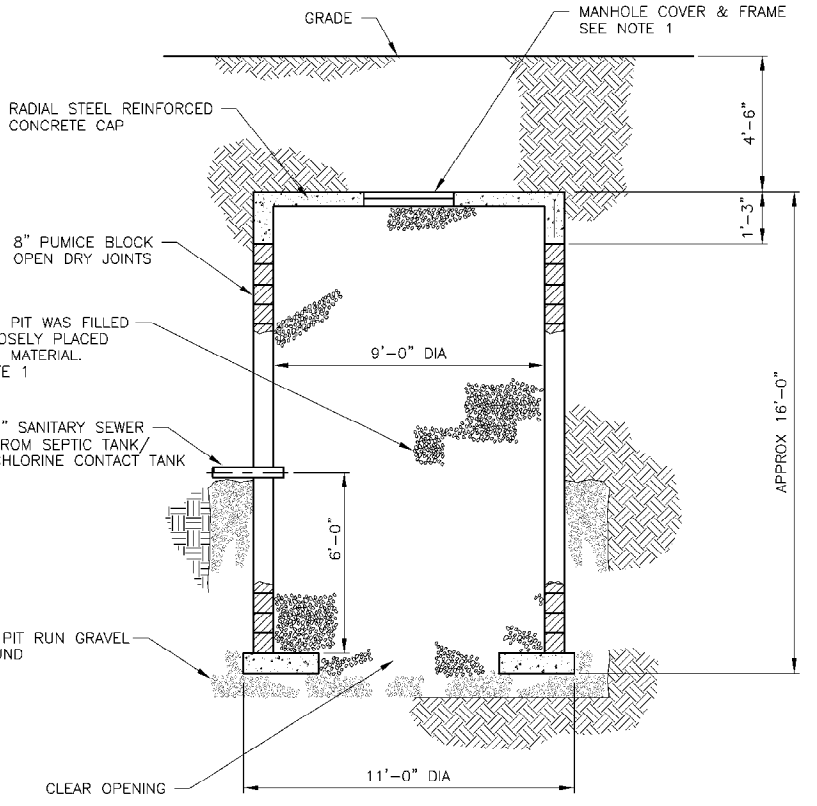
EXISTING TEMPORARY FENCE (4'-0" HIGH) REMOVED APPROX DIMENSIONS 20'-0" PER SIDE

SEEPAGE PIT ARA-21 SEE DETAIL 3

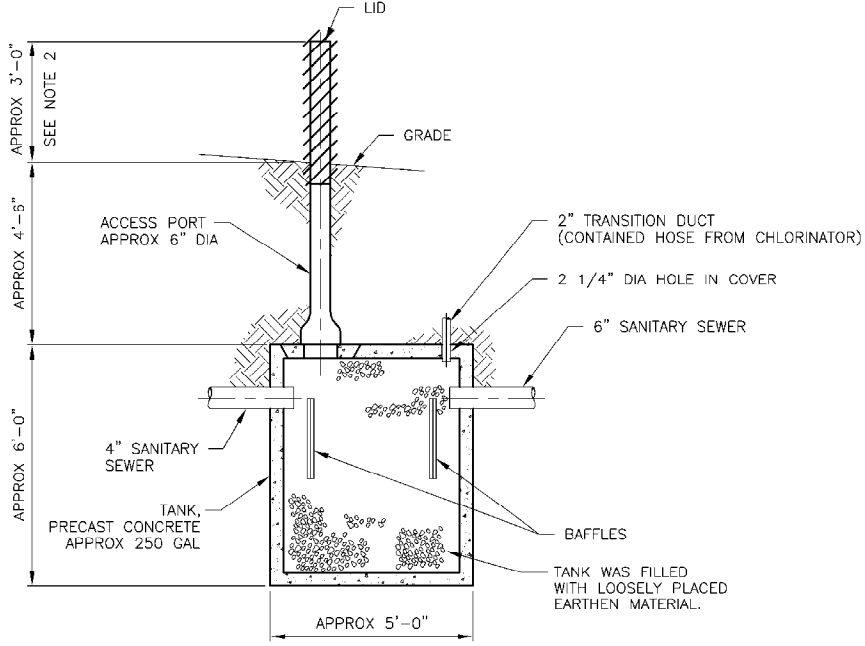
ARA-21 DEMOLITION PLAN
 SCALE: 1/8"=1'-0"



SEPTIC TANK (EQ-10) DETAIL 1
 SCALE: 3/8"=1'-0"



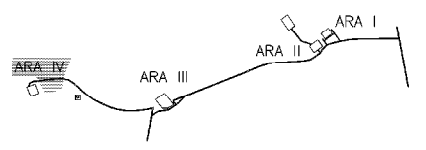
SEEPAGE PIT ARA-21 DETAIL 3
 SCALE: 3/8"=1'-0"



CHLORINE CONTACT TANK (EQ-11) DETAIL 2
 NTS

NOTES

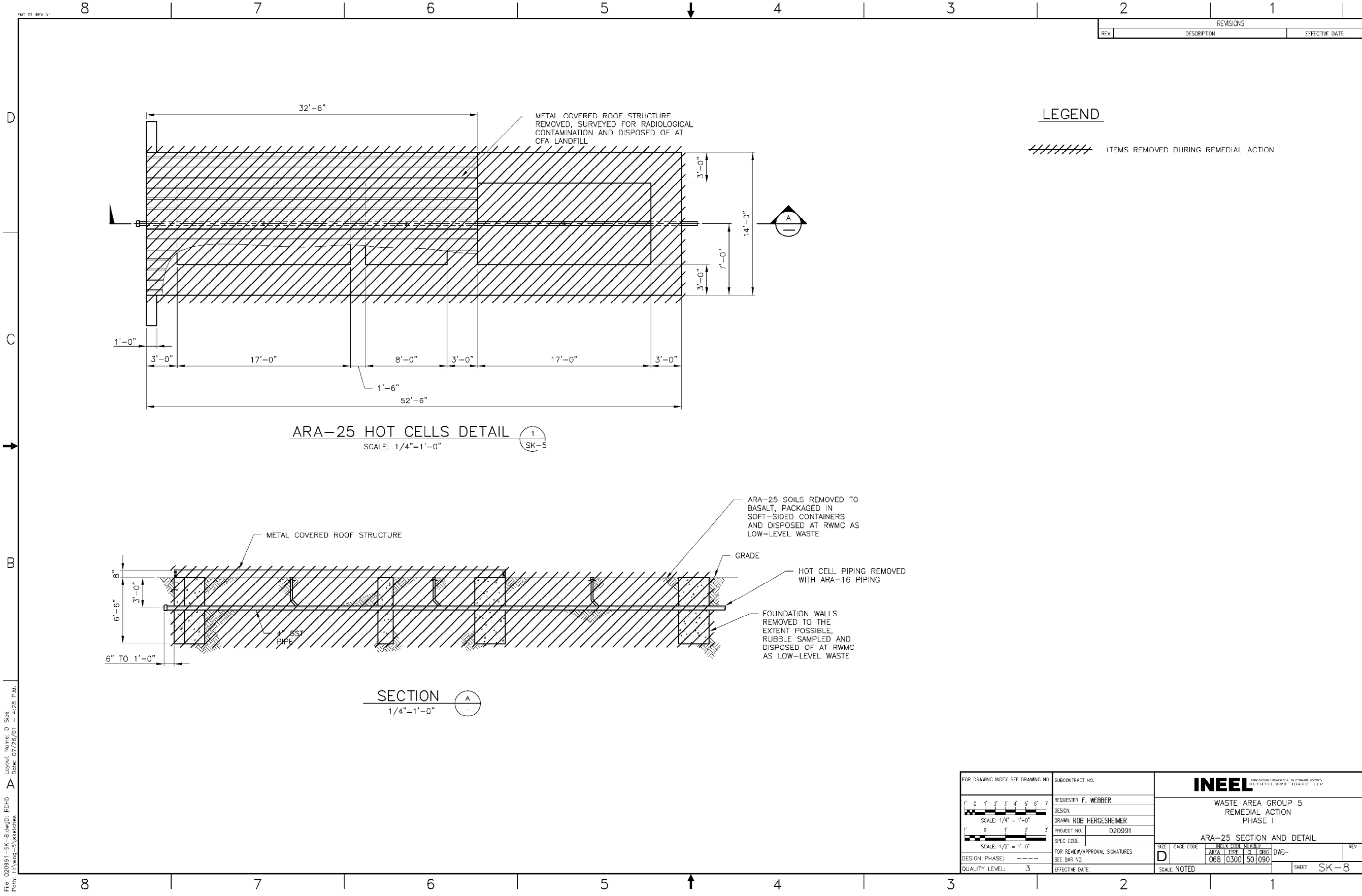
- SEEPAGE PIT LID WAS REMOVED AND THE PIT WAS FILLED W/EARTHEN MATERIAL. THE LID WAS THEN REPLACED AND THE DISTURBANCE BACK FILLED USING EARTHEN MATERIAL TO MATCH EXISTING GRADE ELEVATION.
- ALL COMPONENTS EXTENDING ABOVE GRADE WERE REMOVED AND THE DISTURBED AREA WAS REVEGETATED.



KEY PLAN

FOR DRAWING INDEX SEE DRAWING NO. SKETCH 1		SUBCONTRACT NO.		INEEL <small>INTEGRATED NEUTRON ENGINEERING & TECHNOLOGY</small>	
1' 0" 1' 2" 3" 4" 5" 10' 15'		REQUERER: F. WEBBER			
SCALE: 1/8" = 1'-0"		DESIGN: J.A. LAWRENCE		WASTE AREA GROUP 5 REMEDIAL ACTION PHASE I	
1' 0" 1' 2" 3" 4"		PROJECT NO. 020991		ARA-21 SEPTIC SYSTEM	
SCALE: 3/8" = 1'-0"		SPEC CODE		SIZE CADE CODE INDEX CODE NUMBER	
DESIGN PHASE: ---		FOR REVIEW/APPROVAL SIGNATURES		D 066 0300 50 090 DWG-	
QUALITY LEVEL: 3		SEE DAR NO.		REV	
		EFFECTIVE DATE:		SCALE: NOTED SHEET SK-7	

File: 020991-sk-7.dwg; RDH5
 Plot: F:\wag-3\sketches
 Layout Name: D Size
 Date: 08/07/01 08:24 A.M.



REVISIONS		
REV	DESCRIPTION	EFFECTIVE DATE

LEGEND
 // // // // // ITEMS REMOVED DURING REMEDIAL ACTION

ARA-25 HOT CELLS DETAIL
 SCALE: 1/4"=1'-0"
 1 SK-5

SECTION A-A
 1/4"=1'-0"

FOR DRAWING INDEX SEE DRAWING NO.	SUBCONTRACT NO.	INEEL	
1 2 3 4 5 6 7	REQUESTER: F. WEBBER	WASTE AREA GROUP 5 REMEDIAL ACTION PHASE I	
SCALE: 1/4" = 1'-0"	DESIGN: ROB HERGESHEIMER	ARA-25 SECTION AND DETAIL	
1 2 3	PROJECT NO. 020991	SIZE	CAGE CODE
SCALE: 1/2" = 1'-0"	SPEC CODE	D	065 0300 50 090
DESIGN PHASE: ----	FOR REVIEW/APPROVAL SIGNATURES	AREA	TYPE
QUALITY LEVEL: 3	SEE BAR NO.	065	0300
	EFFECTIVE DATE:	SO	090
		SCALE NOTED	SHEET SK-8

File: 020991-SK-5.dwg
 Plot: A:\wp53\workarea
 Layout Name: D Size
 Date: 07/26/01 4:28 P.M.